



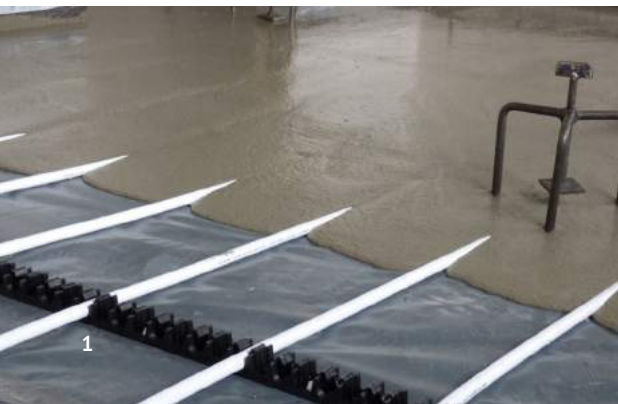
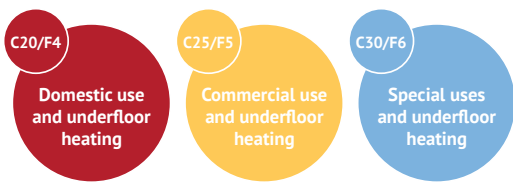
CEMENT BASED  
**Liquid Screed  
Solution**



Cemfloor is a BBA Approved, high-performance cement based, free flowing, self-compacting liquid screed and is suitable for a variety of applications.



During its 20 years of existence Cemexa Technologies has placed itself as a key player on the European market and one of the main active leaders of cement screed development.



## Cemfloor Therm



Due to self-compacting properties of Cemfloor Therm, it is specifically **designed for use with underfloor heating systems**.

Cemfloor Therm screed totally **encapsulates the underfloor heating pipework and eliminates air voids** which ensures optimal heat transfer from the heating pipework to the screed surface.

It can also be installed at much thinner depths compared to traditional sand and cement which ensures ultimate controllability of the underfloor heating system.

When using underfloor heating with Cemfloor, **the energy usage and cost are greatly decreased** due the efficiency of the system. High thermal conductivity of the screed and the lower thickness combines to achieve this improved performance but also mean that the response time is substantially reduced so that the whole system will heat up much quicker.





## Cemfloor High Performance Concrete



Cemfloor High Performance Concrete (HPC) is a specially formulated **self-compacting concrete** containing a 10mm aggregate that can be used to create stronger and more durable floor slabs with **less shrinkage** and increased bay sizes to minimise joints than those constructed with conventional concrete.

Higher compressive and flexural strengths are achieved enabling a **reduction in slab thickness** providing an improved environmental profile. High quality finishes can be achieved without power floating.

**This product is highly suitable for all commercial and light industrial projects.**



## Cemfloor Non-Heated



Cemfloor Non-Heated is a **high-performance cement based, free flowing, self-compacting liquid screed**. It can be installed quickly, foot trafficked in 24-48 hours and has minimal drying shrinkage (<0.05%).

**It is suitable for a variety of applications;** new builds or renovations and single or multi-storey projects.

Its drying properties ensure floor coverings of all types can be installed quicker compared to other types of screed available. **This significantly speeds up the entire build process.**







# Key Benefits



Foot traffic after 24 / 48 hours.



Larger floor area without joints up to 150m<sup>2</sup> unheated, up to 100m<sup>2</sup> with under floor heating.



Exceptional thermal conductivity.



Thinner sections compared to traditional screeds. Only 25mm of screed required above underfloor heating pipes.



Minimal drying shrinkage (<0.05%).



Can be applied in wet areas.



More thermal insulation can be used within the same floor (thickness), compared to traditional sand cement screed which leads to a better energy rating for your building.



Self-compacting – no voids around under floor heating pipes.



Reduced drying times compared to other screeds. Moisture sensitive floor coverings can be applied when the screed has dried to a moisture content of <2.5%CM.



Can be forced dried after 7 days.



No surface laitance (dust) after curing.



Easy installation; up to 1000m<sup>2</sup> per day (reduces time & costs).



Reduced carbon footprint compared to traditional screeds.



Compatible with all cement based adhesives; including fast track systems.



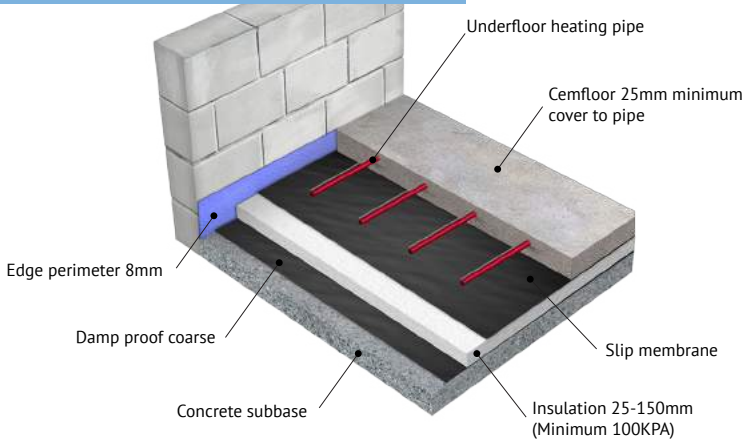
Lower running costs for underfloor heating systems when using Cemfloor. This is due to the exceptional thermal conductivity and the ability to lay thinner screeds over the underfloor heating pipes.

**Cemfloor screeds are very responsive to underfloor heating; due to the fact that they can be laid in very thin sections and have a high thermal conductivity.**

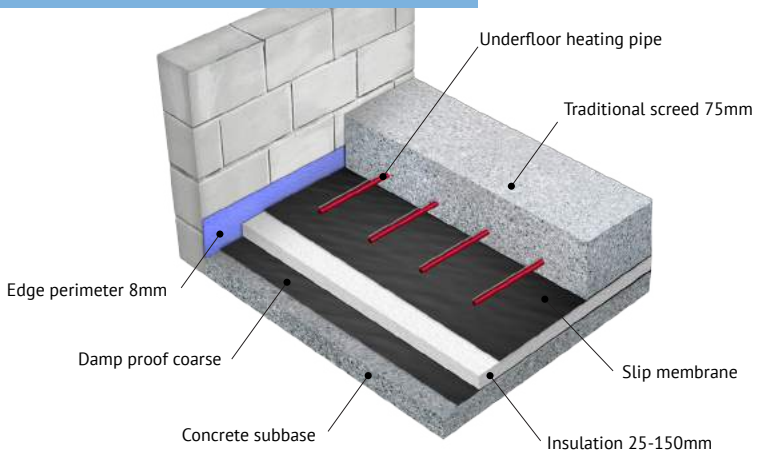
*Since Cemfloor is a cement based screed;*

- Floor coverings can be applied much faster than calcium sulphate screeds which needs to be dried to a final moisture content of 0.5%CM which can delay floor finishings by months.
- Floor finishes can be applied once the screed has dried to a final moisture content of 2.5%CM; speeding up the entire build process.

# Cemfloor



# Traditional Screed



Compared with other liquid screeds which generally need to be force dried with underfloor heating; Cemfloor screeds can be used in non heated floors as it doesn't require force drying to remove moisture. Using the correct tile adhesives; tiles can be placed in as little as 5 days in nonheated floors.

# Additional Information

## Substrate

Cemfloor Screed is designed for use as a bonded thick levelling screed on concrete, as a floating screed over thermal or acoustic insulation, or as an unbonded screed on top of a plastic membrane.

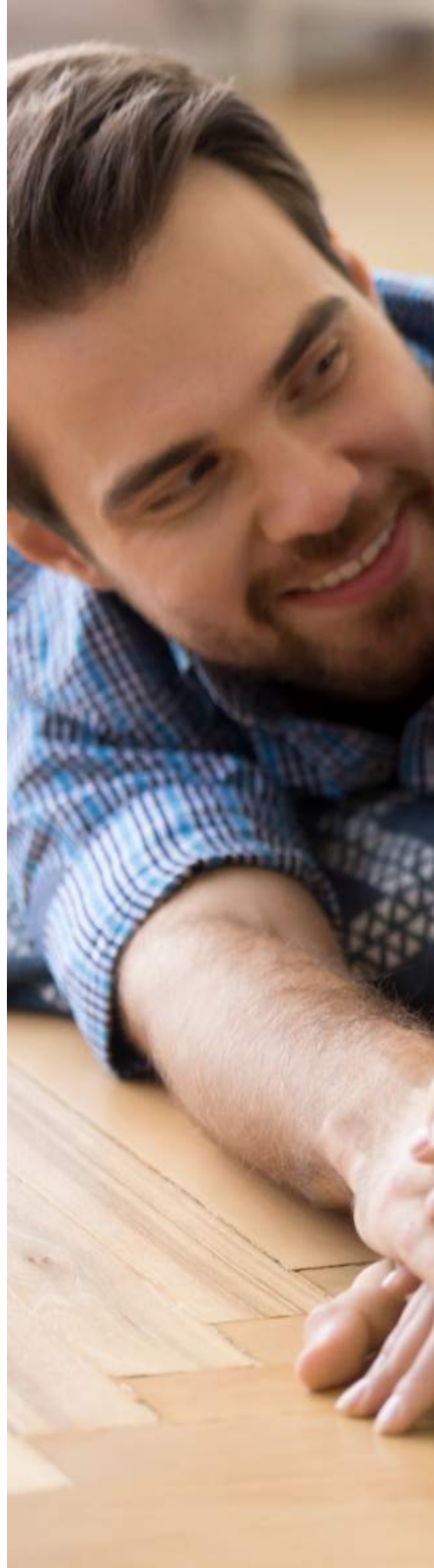
## Floor Covering

Cemfloor is compatible with all types of floor coverings, cementitious adhesives, damp proof membranes and floor levellers. For technical information, contact our technical department.

## Application

Cemfloor screeds should be used in accordance with BS 8204-7:2003 'Code of Practice for Pumpable Self-Smoothing Screeds'.

To ensure a high quality screed it is recommended that application is carried out by a specialist screeding contractor who has completed the necessary Cemfloor training.









CEMENT BASED

# Liquid Screed Solution



## Technical Information

Cemfloor is produced in an ISO 9001 quality-controlled environment. Self levelling screeds produced with Cemfloor meet the requirements of EN 13813:2002 'Screed Material for Floor Screeds'.

### SCREED SPECIFICATION EN 13813:2002

Compressive Strength	>20 N/mm <sup>2</sup> >25 N/mm <sup>2</sup> >30 N/mm <sup>2</sup>
Flexural Strength	>4 N/mm <sup>2</sup> >5 N/mm <sup>2</sup> >6 N/mm <sup>2</sup>
Minimum Thickness	Bonded: 20mm Unbonded: 30mm Domestic Floating Floor: 35mm Commercial Floating Floor: 40mm Over underfloor heating pipes: minimum cover 25mm above pipes
Shrinkage (28 Days)	<0.05%
Flow Rate	230–260mm
Fire Rating	non-combustible
Open to Light Foot Traffic	24-48 Hours
Surface Flatness	Min SR2
ISCR Test	Category A
Maximum Bay Sizes	Heated Floors = 100m <sup>2</sup> Non-Heated Floors = 150m <sup>2</sup>



Please send all enquiries to  
Or alternatively to [info@cemfloor.co.uk](mailto:info@cemfloor.co.uk)



# TRAIT'S FLOORING



Telephone

Location



W:  
E:

